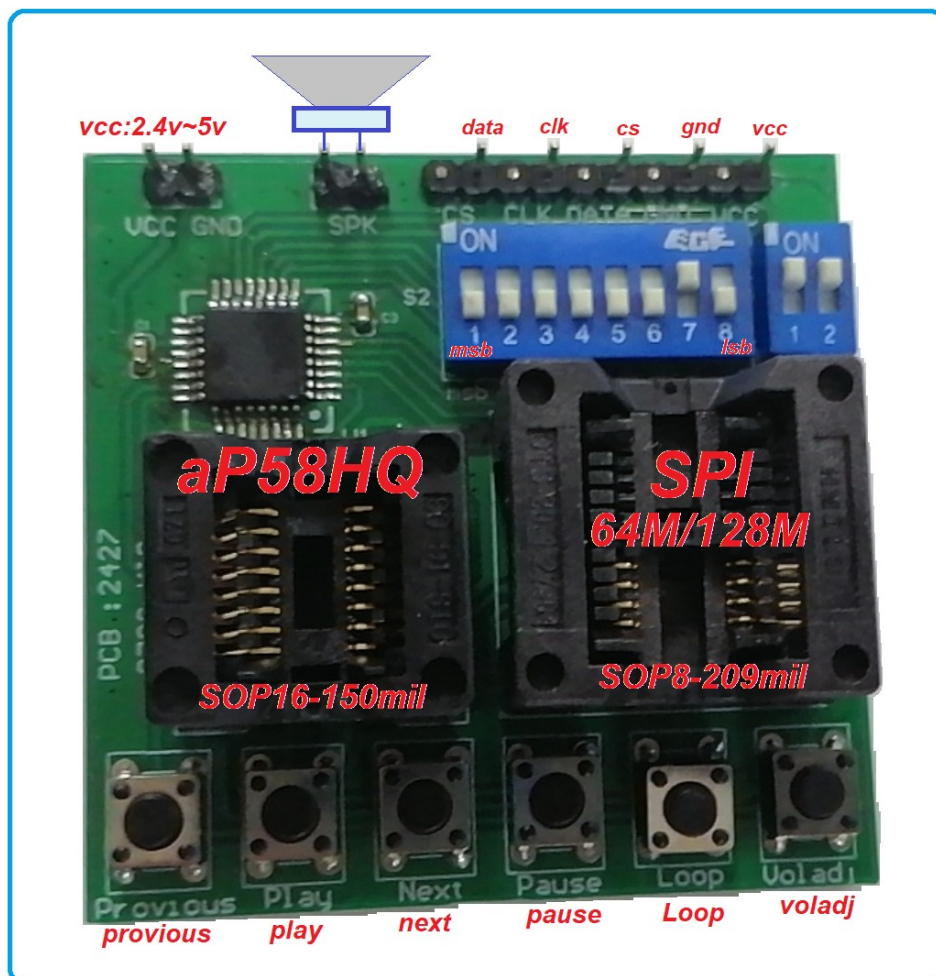
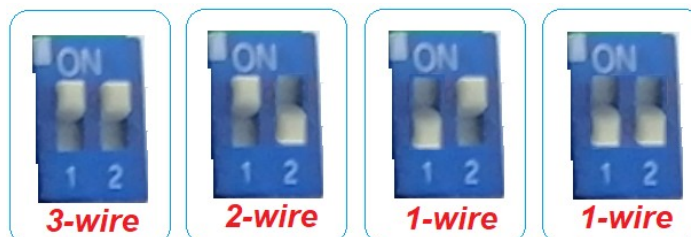


aP58QM-KIS16 user manual


- Part no. : Q7Q8 KIS
- Pcb no. : 2427
- Pcb size : 55 x 54 mm
- VCC : 2.4V ~ 5.0V
- Support cpu : 1-wire , 2-wire , 3-wire cpu serial mode



- Serial mode options :



Command :

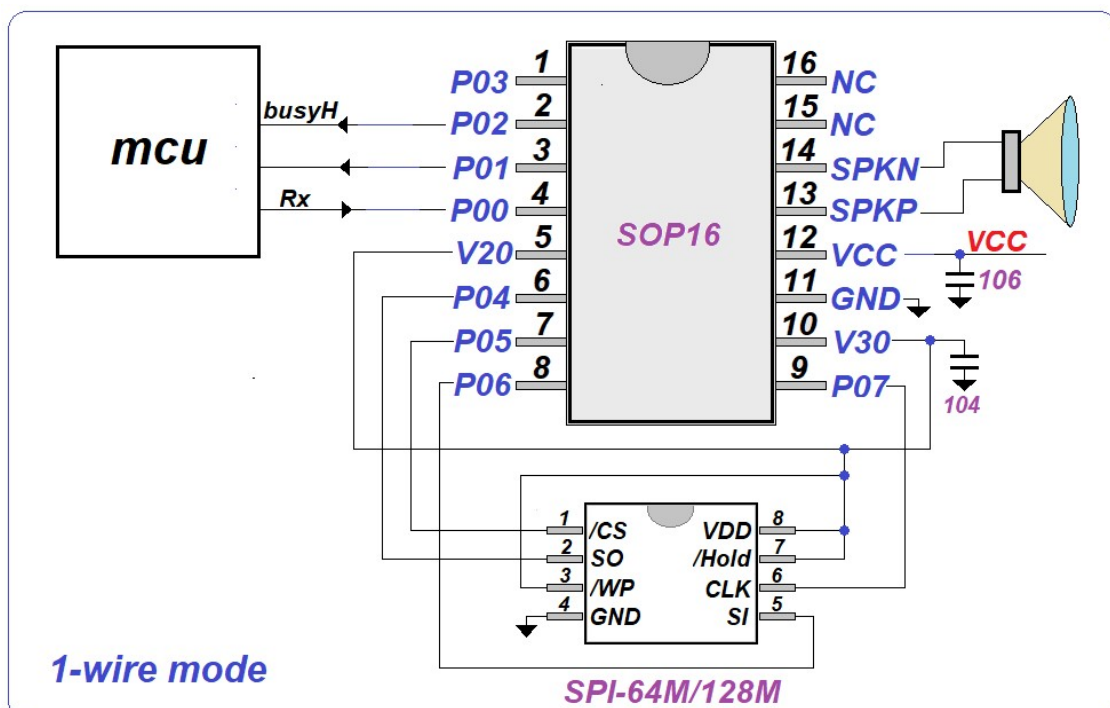
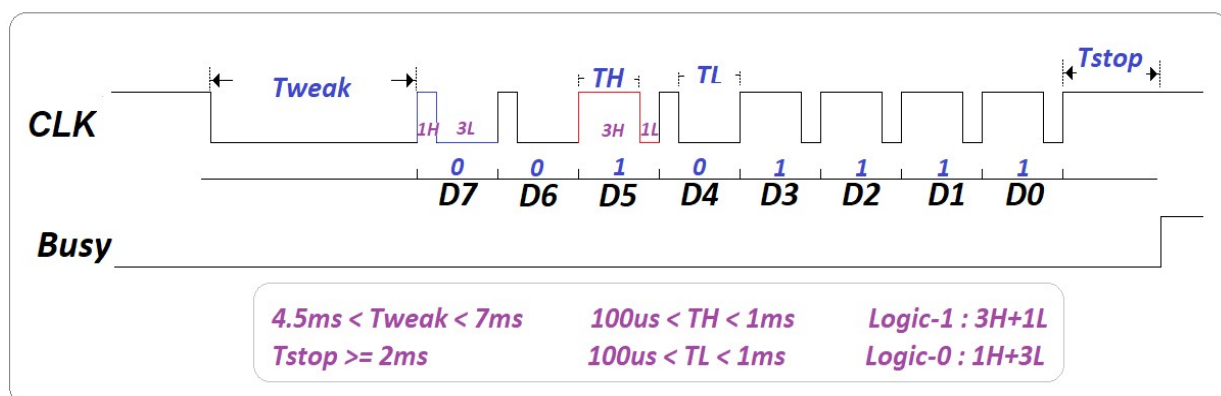
command	D7	D6	D5	D4	D3	D2	D1	D0
Play Previous [Previous key]	FD							
	s3→s2→s1→sn→sn-1→sn-2→.....s2→s1→sn→sn-1→.....							
play sentence(n) [play key]	01 ~DF							
	 address[02]: 0000-0010							
Play Next [Next key]	FC							
	s1→s2→s3→s4→s5→..... sn →s1→s2→.....							
Pause / Resume [Pause key]	FE							
	Pause / resume							
repeat off	F8							
repeat on [Loop key]	F9							
	Repeat on / repeat off [on/off]							
set volume (n) [voladj key]	E0 ~ EF							
	vol6→vol5→vol4→vol3→vol2→vol1→vol2→vol3→vol4→vol5 →vol6→vol1→vol2→vol3→..... Vol6=15 , vol5=12 , vol4=9 , vol3=6 , vol2=3 , vol1=1							

1. 1-wire mode :

P00	P01	P02	P03
Rx	Out	Out	Out/Reset

Out option : busyH , busyL , 3Hz , 6Hz , LED-dyna , stopH , stopL

P03 = input- reset (option)

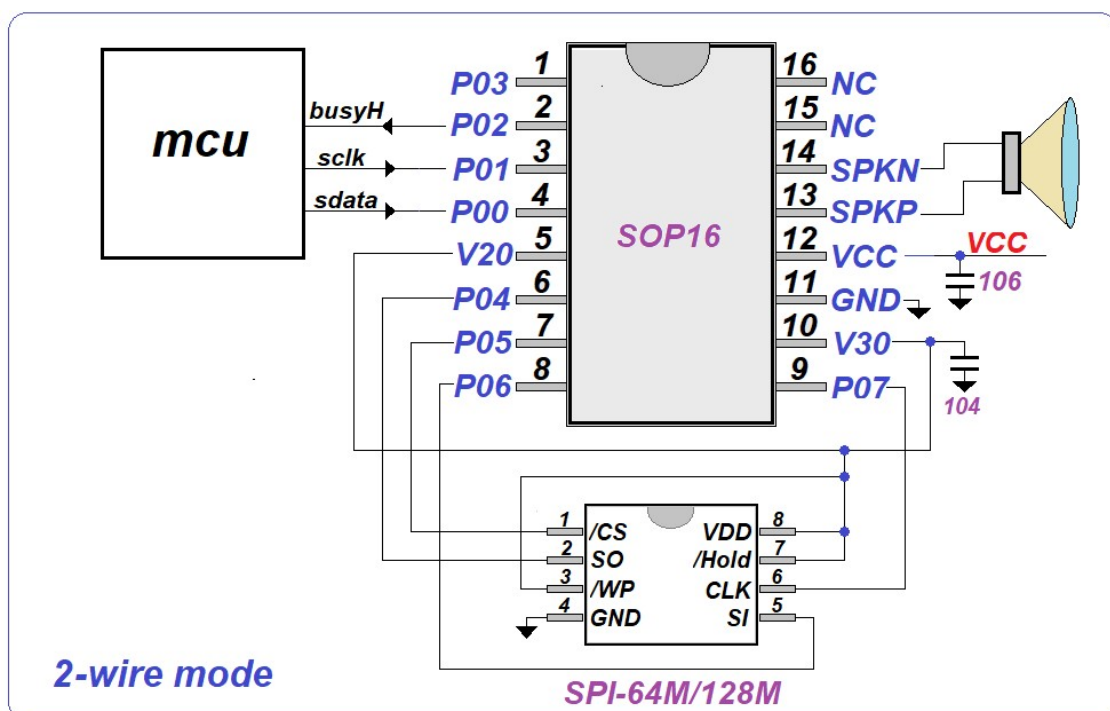
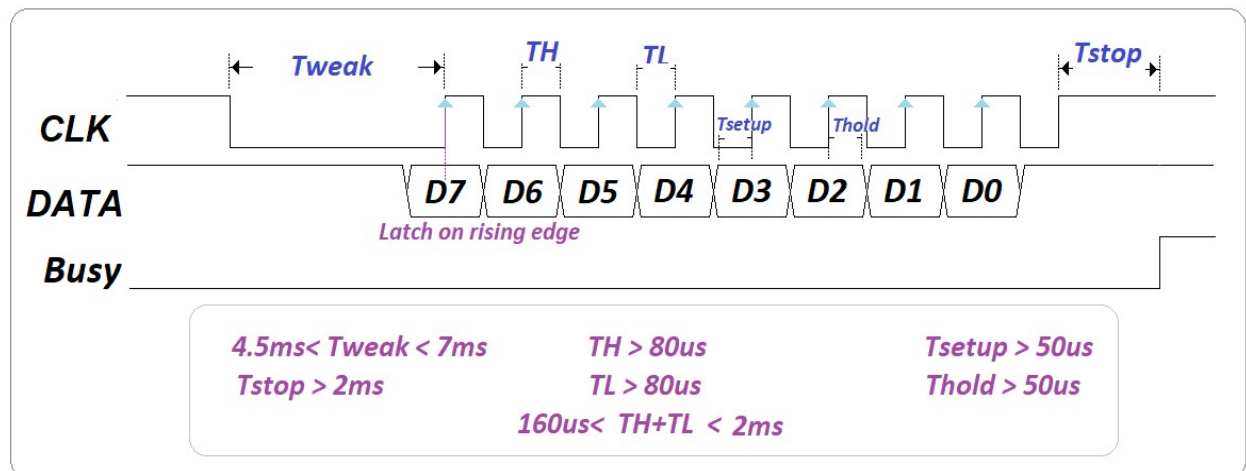


2. 2-wire mode :

P00	P01	P02	P03
sdata	sclk	Out	Out/Reset

Out option : busyH , busyL , 3Hz , 6Hz , LED-dyna , stopH , stopL

P03 = input- reset (option)

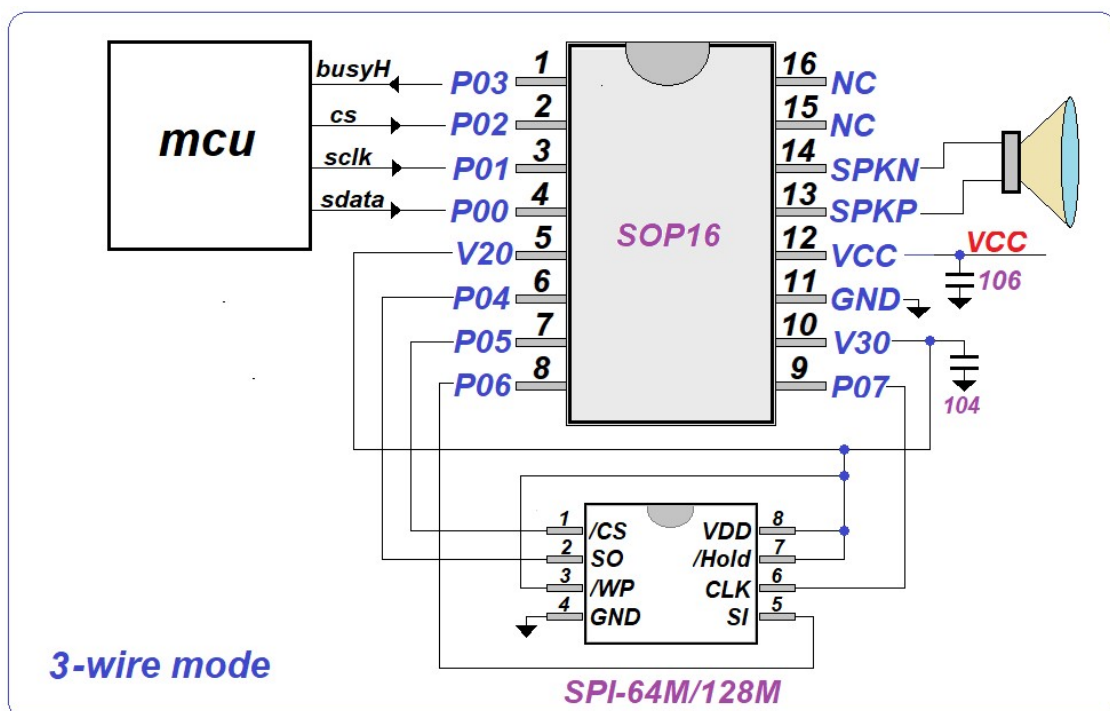
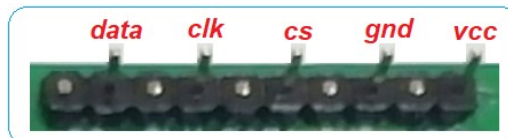
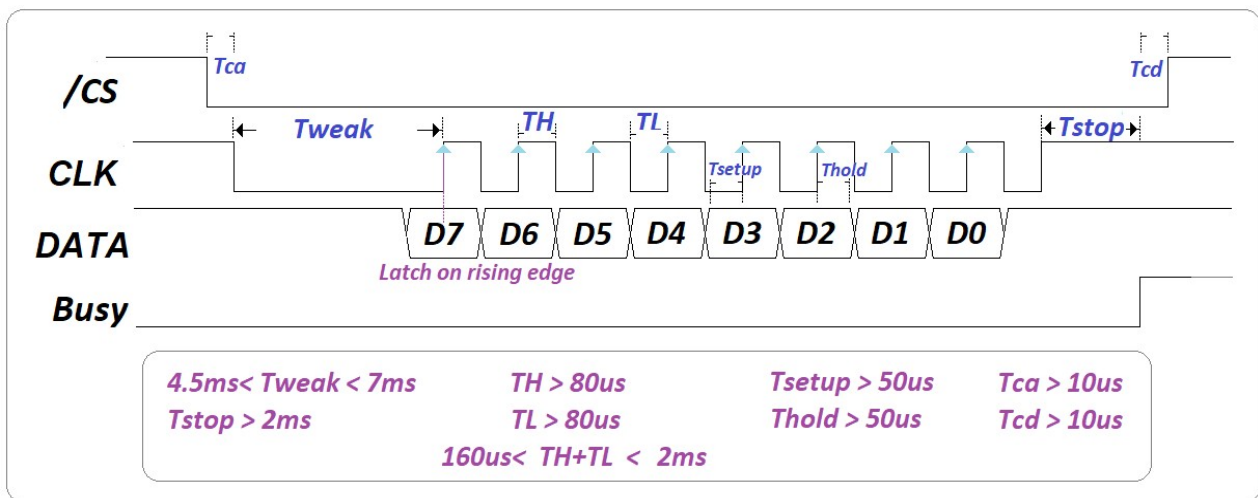


3. 3-wire mode :

P00	P01	P02	P03
sdata	sclk	Cs	Out/Reset

Out option : busyH , busyL , 3Hz , 6Hz , LED-dyna , stopH , stopL

P03 = input- reset (option)



21 OCT 2024

aP58QM-KIS16 user manual.

01 April 2025

Modify Page. 2 Command Table set volume (n) 0E→ E0 ~ EF
